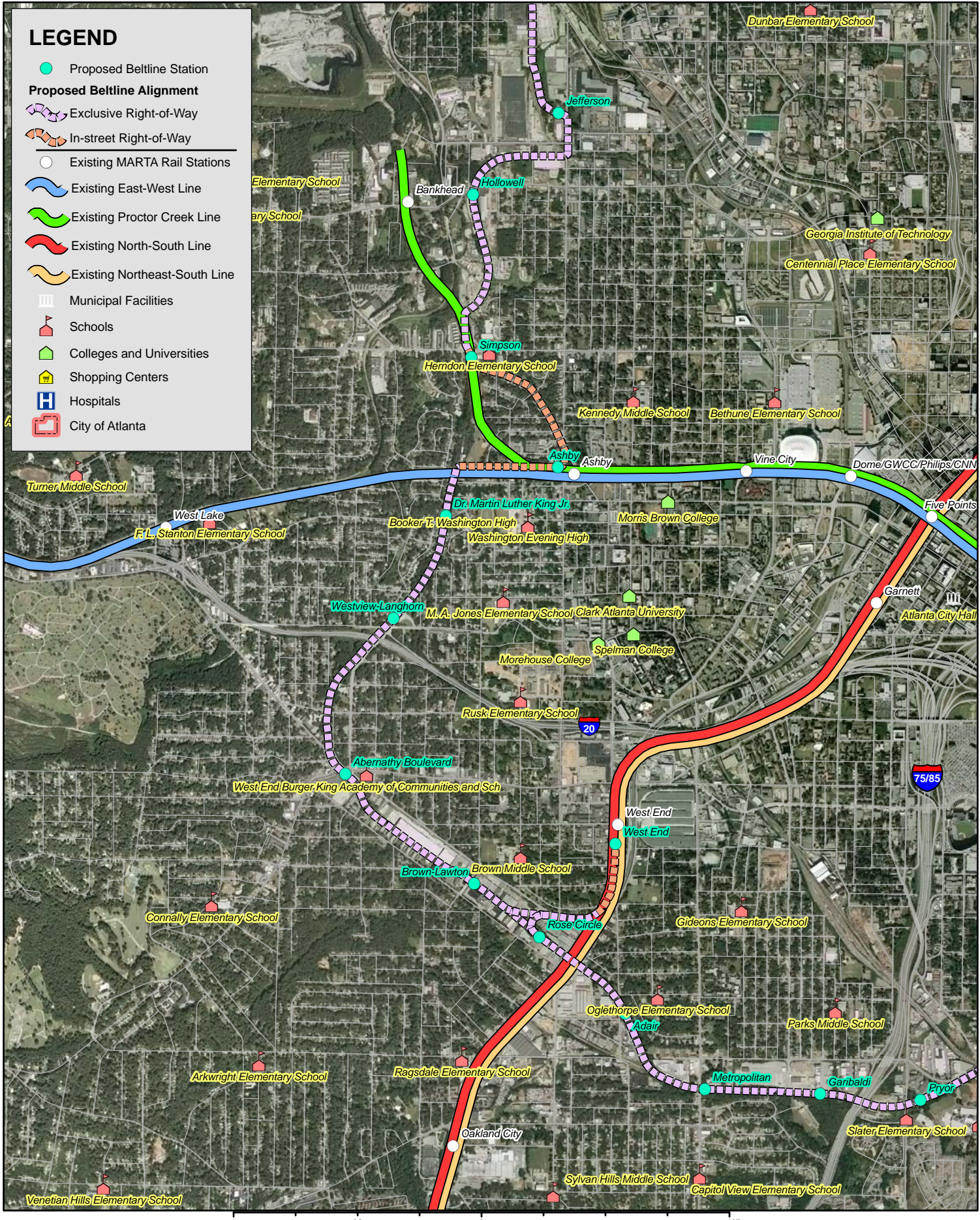


# LEGEND

- Proposed Beltline Station
- Proposed Beltline Alignment**
- Exclusive Right-of-Way
- In-street Right-of-Way

---

- Existing MARTA Rail Stations
- Existing East-West Line
- Existing Proctor Creek Line
- Existing North-South Line
- Existing Northeast-South Line
- Municipal Facilities
- 🏠 Schools
- 🏫 Colleges and Universities
- 🛍️ Shopping Centers
- 🏥 Hospitals
- 🏛️ City of Atlanta



**Proposed Beltline Alignment and Stations  
Southwest Segment**  
January 2007

